

Survey @ 641.31 mMDRT
 Incl: 1.32 deg
 Azi: 347.27 deg
 TVD: 641.30m

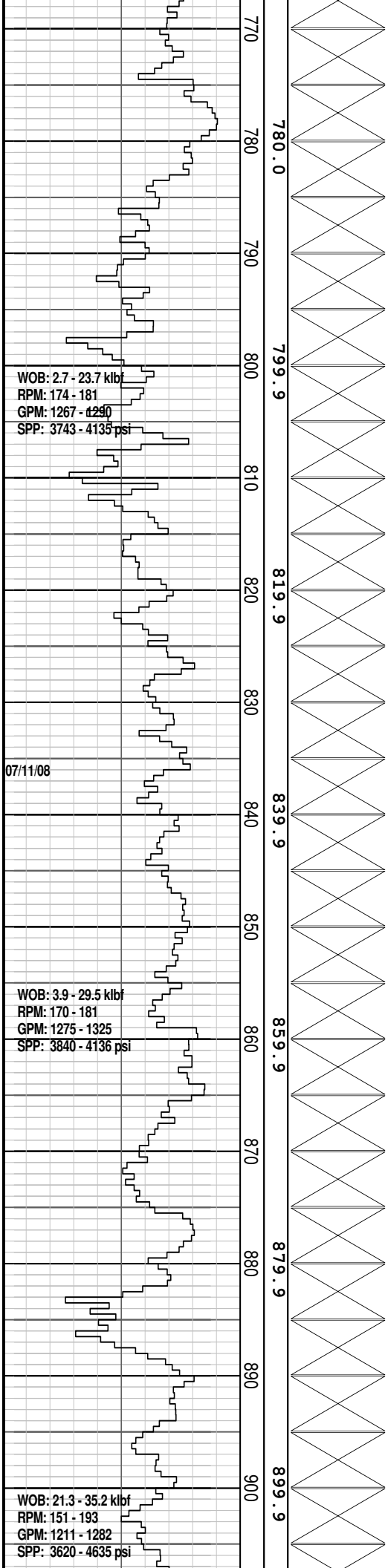
Survey @ 729.08 mMDRT
 Incl: 1.27 deg
 Azi: 349.67 deg
 TVD: 729.05m

Survey @ 758.04 mMDRT
 Incl: 1.3 deg
 Azi: 347.73 deg
 TVD: 758.0m

Drill 406mm hole w/seawater and hi-vis gel sweeps. Returns to Seabed.

Drill 406mm hole w/seawater and hi-vis gel sweeps. Returns to Seabed.

Drill 406mm hole w/seawater and hi-vis gel sweeps. Returns to Seabed.



WOB: 2.7 - 23.7 kbf
 RPM: 174 - 181
 GPM: 1267 - 1290
 SPP: 3743 - 4135 psi

07/11/08

WOB: 3.9 - 29.5 kbf
 RPM: 170 - 181
 GPM: 1275 - 1325
 SPP: 3840 - 4136 psi

WOB: 21.3 - 35.2 kbf
 RPM: 151 - 193
 GPM: 1211 - 1282
 SPP: 3620 - 4635 psi

780.0

799.9

819.9

839.9

859.9

879.9

899.9

Survey @ 815.76 mMDRT
 Incl: 1.05 deg
 Azi: 343.05 deg
 TVD: 815.71m

Survey @ 844.38 mMDRT
 Incl: 0.97 deg
 Azi: 344.98 deg
 TVD: 844.32m

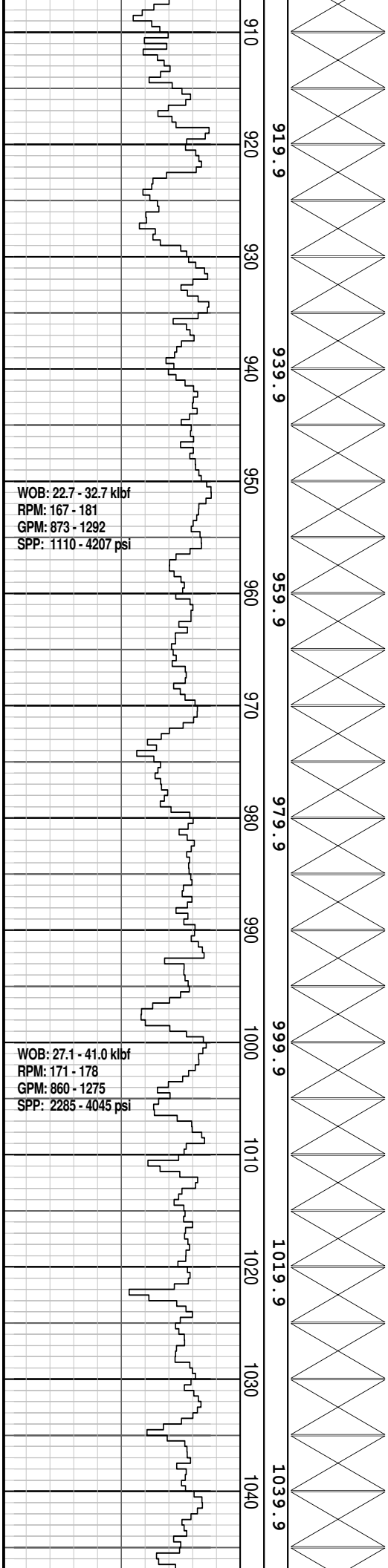
Survey @ 850.0 mMDRT
 Incl: 1.0 deg
 Azi: 1.0 deg
 TVD: 849.94m

Survey @ 901.69 mMDRT
 Incl: 0.83 deg
 Azi: 347.84 deg
 TVD: 901.62m

Drill 406mm hole w/ seawater and hi-vis gel sweeps. Returns to Seabed.

Drill 406mm hole w/ seawater and hi-vis gel sweeps. Returns to Seabed.

Drill 406mm hole w/ seawater and hi-vis gel sweeps. Returns to Seabed.



WOB: 22.7 - 32.7 kbf
 RPM: 167 - 181
 GPM: 873 - 1292
 SPP: 1110 - 4207 psi

WOB: 27.1 - 41.0 kbf
 RPM: 171 - 178
 GPM: 860 - 1275
 SPP: 2285 - 4045 psi

Survey @ 1016.72 mMDRT
 Incl: 0.47 deg
 Azi: 350.64 deg
 TVD: 1016.65m

Drill 406mm hole w/ seawater and
 hi-vis gel sweeps. Returns to Seabed.

Drill 406mm hole w/ seawater and
 hi-vis gel sweeps. Returns to Seabed.

WOB: 21.1 - 44.9 kbf
RPM: 174 - 180
GPM: 1200 - 1290
SPP: 2227 - 4220 psi

WOB: 31.7 - 56.2 kbf
RPM: 122 - 189
GPM: 1060 - 1275
SPP: 3008 - 4155 psi

WOB: 22.0 - 57.2 kbf
RPM: 98 - 165
GPM: 916 - 1278
SPP: 2200 - 4220 psi

1050
1060
1070
1080
1090
1100
1110
1120
1130
1140
1150
1160
1170
1180

1059.9
1079.9
1099.9
1119.9
1139.9
1159.9
1179.9

Survey @ 1074.58 mMDRT
Incl: 0.45 deg
Azi: 1.50 deg
TVD: 1074.51m

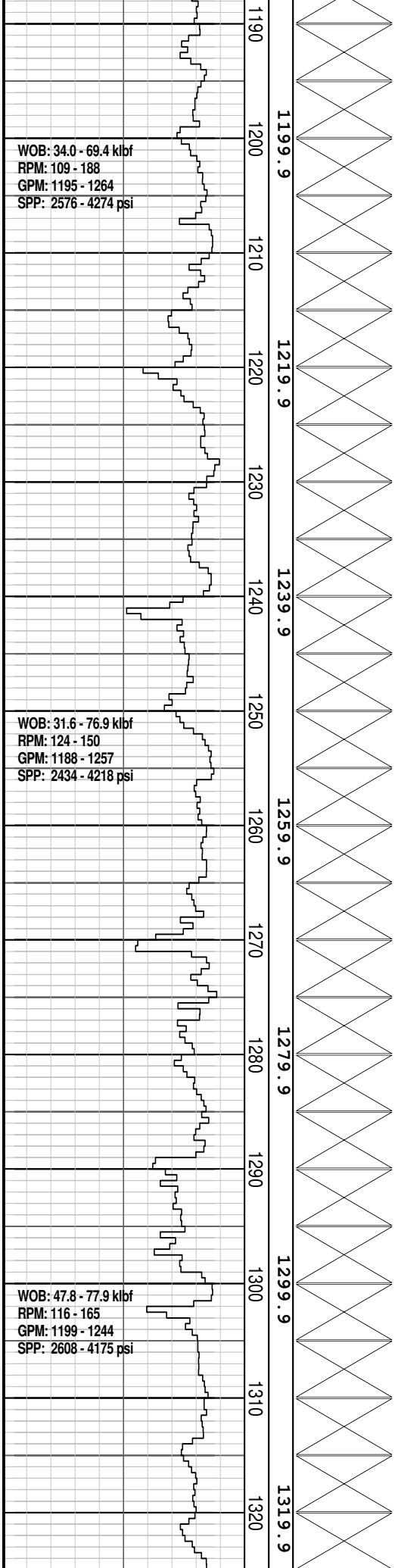
Survey @ 1132.15 mMDRT
Incl: 0.26 deg
Azi: 336.38 deg
TVD: 1132.07m

Survey @ 1160.99 mMDRT
Incl: 0.25 deg
Azi: 342.45 deg
TVD: 1160.91m

Drill 406mm hole w/ seawater and hi-vis gel sweeps. Returns to Seabed.

Drill 406mm hole w/ seawater and hi-vis gel sweeps. Returns to Seabed.

Drill 406mm hole w/ seawater and hi-vis gel sweeps. Returns to Seabed.



WOB: 34.0 - 69.4 kbf
 RPM: 109 - 188
 GPM: 1195 - 1264
 SPP: 2576 - 4274 psi

WOB: 31.6 - 76.9 kbf
 RPM: 124 - 150
 GPM: 1188 - 1257
 SPP: 2434 - 4218 psi

WOB: 47.8 - 77.9 kbf
 RPM: 116 - 165
 GPM: 1199 - 1244
 SPP: 2608 - 4175 psi

1199.9
 1219.9
 1239.9
 1259.9
 1279.9
 1299.9
 1319.9

Survey @ 1189.79 mMDRT
 Incl: 0.28 deg
 Azi: 339.34 deg
 TVD: 1189.71m

Survey @ 1218.51 mMDRT
 Incl: 0.36 deg
 Azi: 337.60 deg
 TVD: 1218.43m

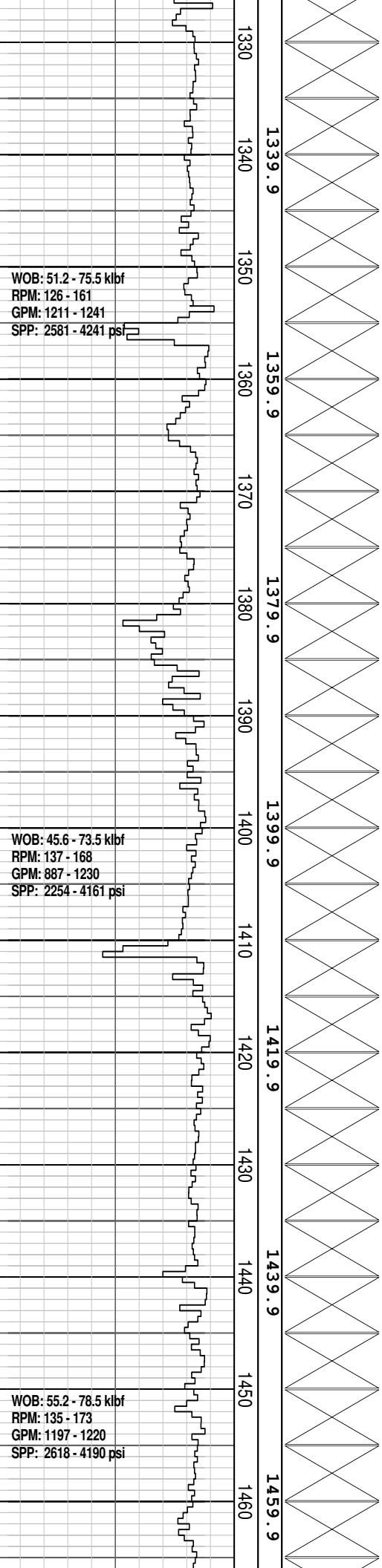
Survey @ 1247.27 mMDRT
 Incl: 0.31 deg
 Azi: 352.14 deg
 TVD: 1247.19m

Survey @ 1275.84 mMDRT
 Incl: 0.35 deg
 Azi: 336.74 deg
 TVD: 1275.76m

Drill 406mm hole w/ seawater and hi-vis gel sweeps. Returns to Seabed.

Drill 406mm hole w/ seawater and hi-vis gel sweeps. Returns to Seabed.

Drill 406mm hole w/ seawater and hi-vis gel sweeps. Returns to Seabed.



WOB: 51.2 - 75.5 kbf
RPM: 126 - 161
GPM: 1211 - 1241
SPP: 2581 - 4241 psi

WOB: 45.6 - 73.5 kbf
RPM: 137 - 168
GPM: 887 - 1230
SPP: 2254 - 4161 psi

WOB: 55.2 - 78.5 kbf
RPM: 135 - 173
GPM: 1197 - 1220
SPP: 2618 - 4190 psi

1339.9
1359.9
1379.9
1399.9
1419.9
1439.9
1459.9

Survey @ 1333.43 mMDRT
Incl: 0.45 deg
Azi: 3337.84 deg
TVD: 1333.35m

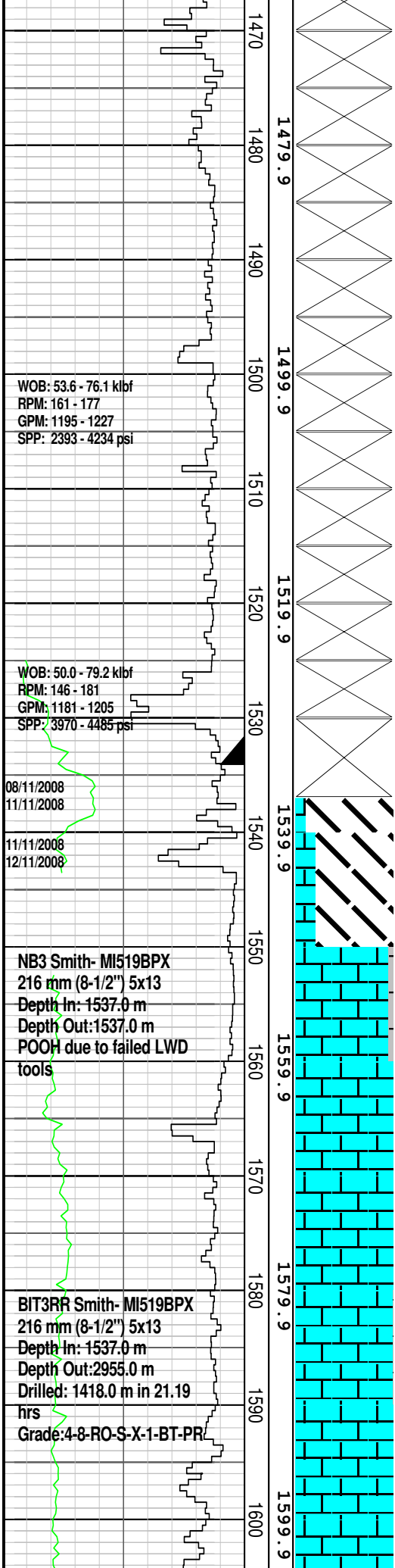
Survey @ 1362.39 mMDRT
Incl: 0.36 deg
Azi: 331.14 deg
TVD: 1362.31m

Survey @ 1391.37 mMDRT
Incl: 0.36 deg
Azi: 337.89 deg
TVD: 1391.29m

Drill 406mm hole w/ seawater and hi-vis gel sweeps. Returns to Seabed.

Drill 406mm hole w/ seawater and hi-vis gel sweeps. Returns to Seabed.

Drill 406mm hole w/ seawater and hi-vis gel sweeps. Returns to Seabed.



WOB: 53.6 - 76.1 kbf
 RPM: 161 - 177
 GPM: 1195 - 1227
 SPP: 2393 - 4234 psi

WOB: 50.0 - 79.2 kbf
 RPM: 146 - 181
 GPM: 1181 - 1205
 SPP: 3970 - 4485 psi

08/11/2008
 11/11/2008

11/11/2008
 12/11/2008

NB3 Smith- MI519BPX
 216 mm (8-1/2") 5x13
 Depth In: 1537.0 m
 Depth Out: 1537.0 m
 POOH due to failed LWD
 tools

BIT3RR Smith- MI519BPX
 216 mm (8-1/2") 5x13
 Depth In: 1537.0 m
 Depth Out: 2955.0 m
 Drilled: 1418.0 m in 21.19
 hrs
 Grade: 4-8-RO-S-X-1-BT-PR

Survey @ 1478.77 mMDRT
 Incl: 0.44 deg
 Azi: 339.78 deg
 TVD: 1478.69m

Survey @ 1507.62 mMDRT
 Incl: 0.41 deg
 Azi: 345.24 deg
 TVD: 1507.62m

Survey @ 1519.07 mMDRT
 Incl: 0.33 deg
 Azi: 354.14 deg
 TVD: 1518.99m

Survey @ 1555.75 mMDRT
 Incl: 0.62 deg
 Azi: 13.67 deg
 TVD: 1555.66m

Survey @ 1584.25 mMDRT
 Incl: 0.70 deg
 Azi: 1.92 deg
 TVD: 1584.16m

Drill 406mm hole w/ seawater and hi-vis gel sweeps. Returns to Seabed.

LWD GR and Res Data from 1525.0m to 2940.0m

340mm (13-3/8") Casing Shoe @ 1534.14 mMDRT

Reached 406mm (16") Section TD @ 1537.0m at 00:30 hrs on 08/11/2008

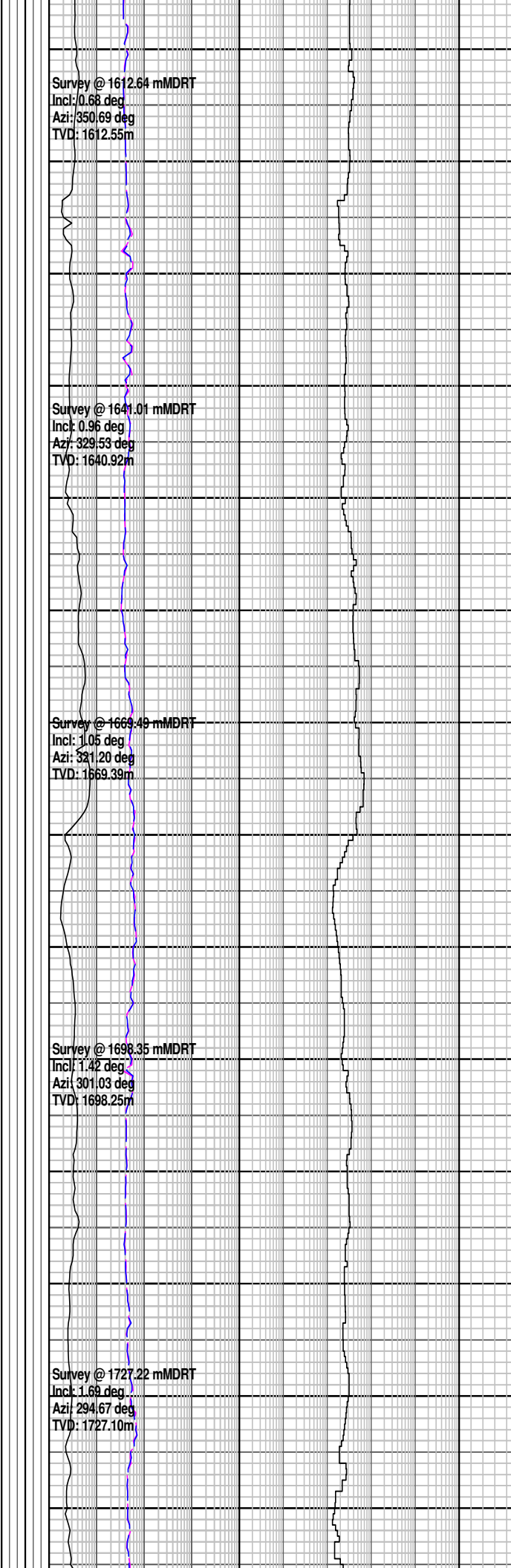
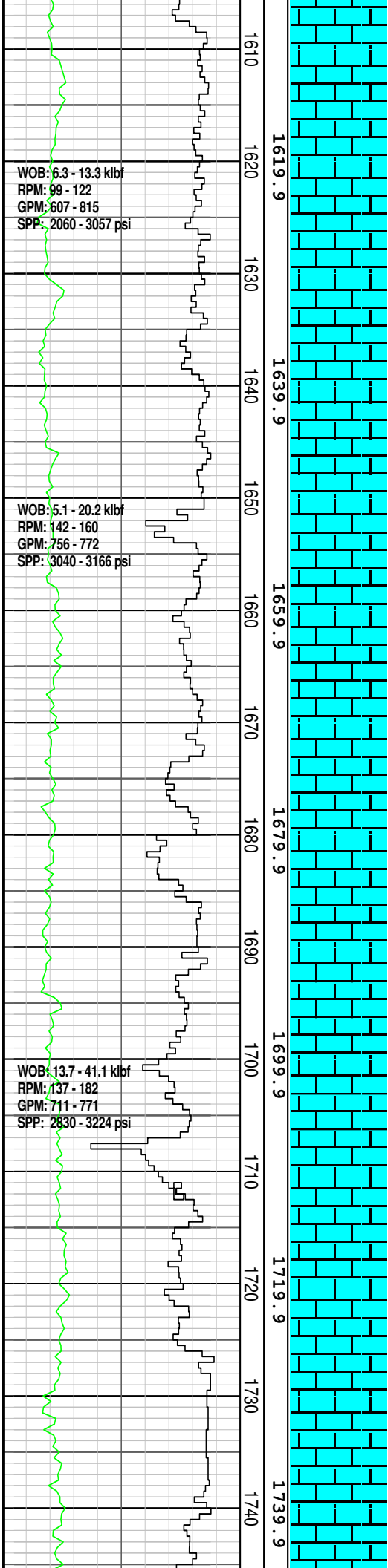
Drill with 9.6 ppg (1.15 sg) WBM

MW 1.15 V 54 PV 13 YP 20
 GELS 5/7/7 CI 60 K Sol 4.8

DOLOMITIC CLAYSTONE: lt yel, or, abdt calc mat, mnr lith, mod hd-hd, sb-blky

LOT@ 1540.00 mMDRT: 1.34 sg (EMW)

CALCULUTITE: lt gry, lt gn gry, lt gry-off wh, m gn gry, com arg mtx, occ f qtz gr, com dk lit & glauc mat, occ mic foss, occ or calc frag, frm-mod hd, sbbkly-blky

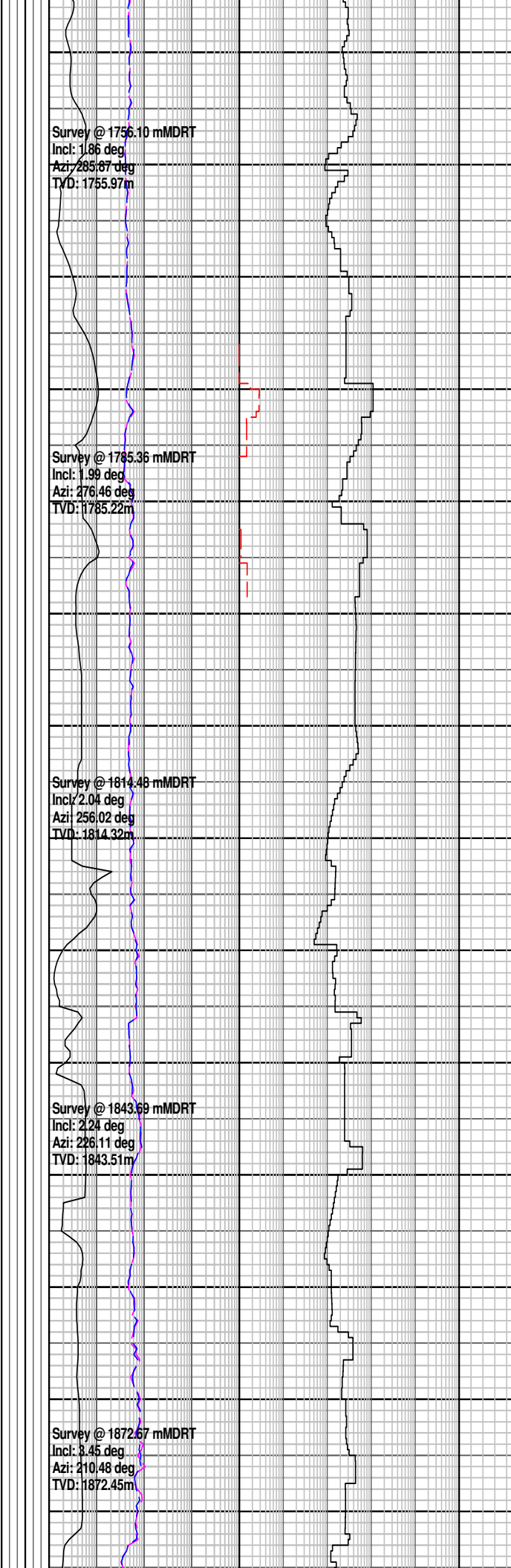
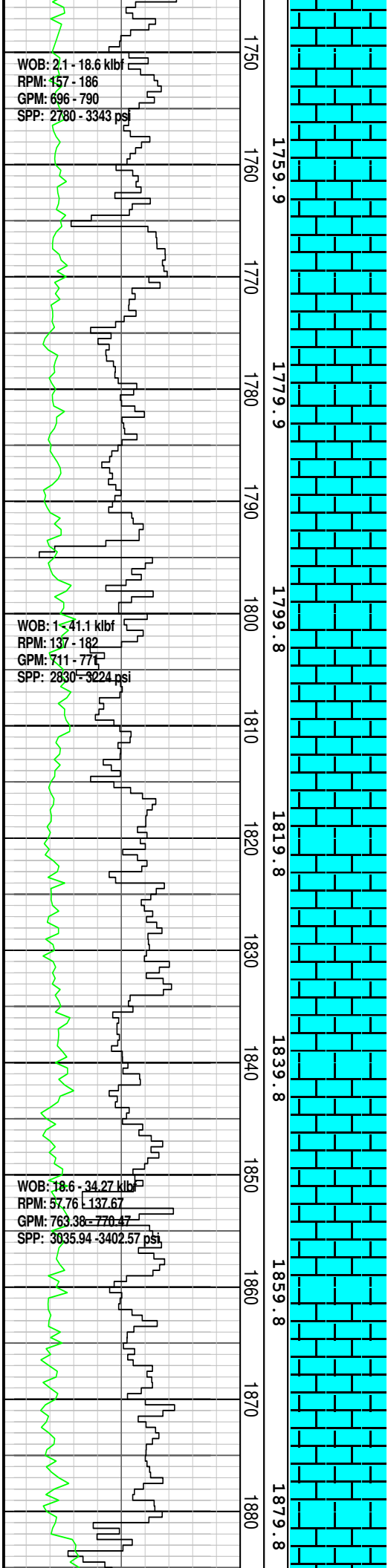


CALCULUTITE: lt gry, lt gn gry, lt gry-off wh, m gn gry, com arg mtx, occ f qtz gr, com dk lith & glauc mat, occ mic foss, occ or calc frag, slty i/p & loc grd-ARG CLCLT, frm-mod hd, sbbiky-blky

OOLITIC CALCARENITE: m lt gry-m gry, v f-v crs, pr srt, rnd-sbang, abdt arg mtx, rr micrxln, mnr qtz gr v f-v crs, wl rnd, tr lith, abdt foss, (oo, Foram, Amm), mnr glauc, lse, brit-mod hd i/p, dom n vis por, gd inf por, n shw

CALCISILTITE: m lt gry-lt olv gry, mnr m gry, abdt mtx & grad-CLCLT i/p, grad-CLCAR i/p, abdt v f dk lith, com foss (Foram & oo), abdt v f qtz gr, tr glauc, tr carb mat, sft-brit, dom frm, com sft & brit, sbbiky, n vis por

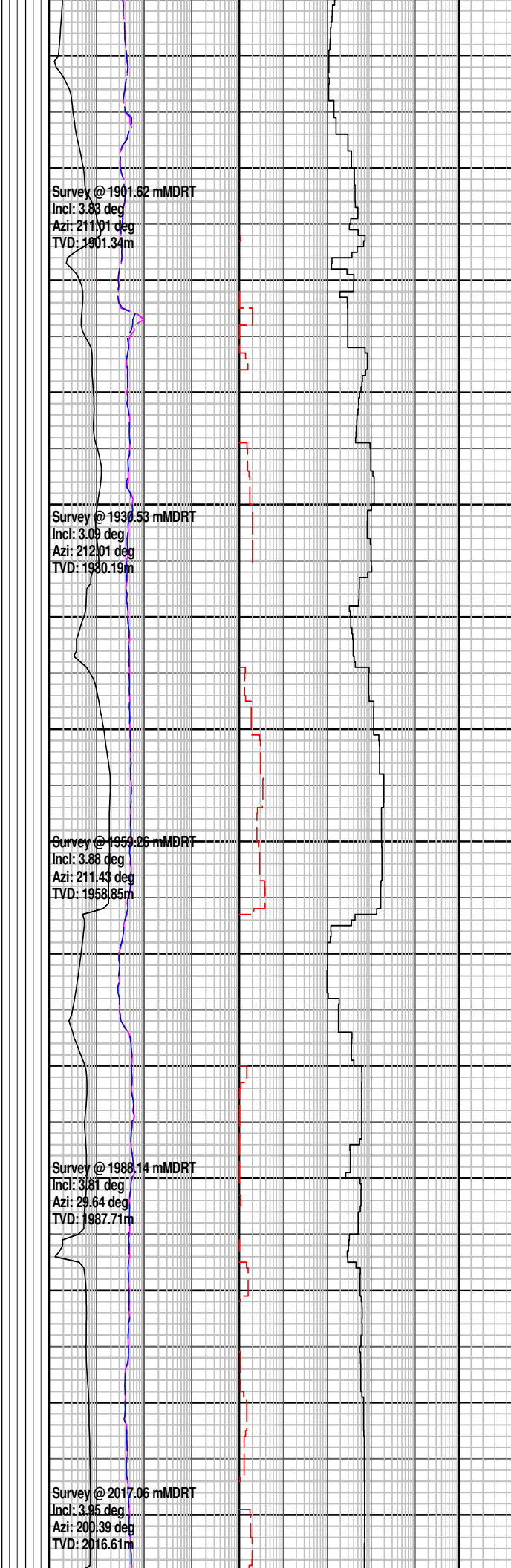
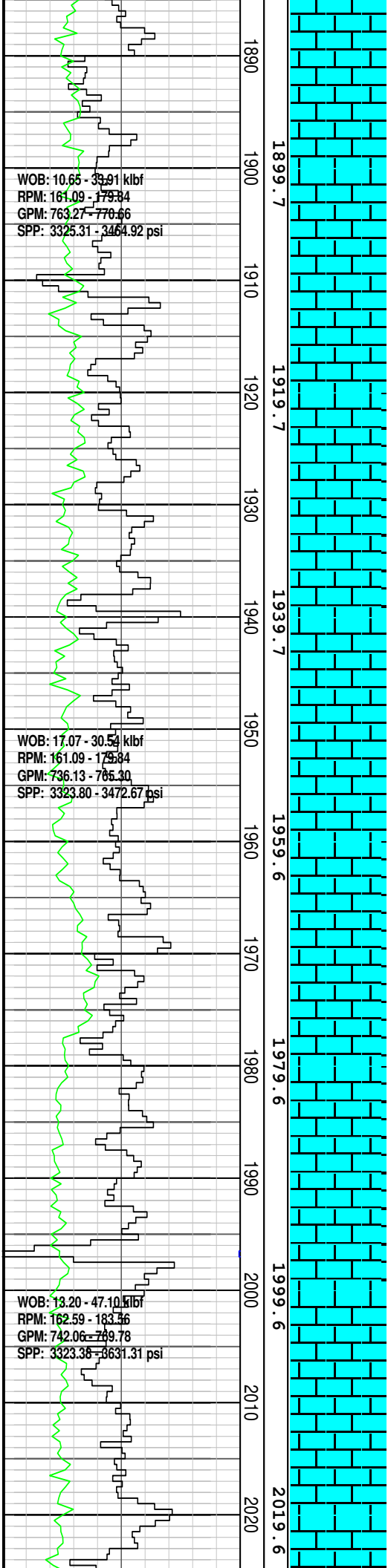
CALCISILTITE: dom gnsh gry-lt olv gry, com m lt gry-lt olv gry, abdt mtx &



olv gry, abdt mtz, grad-CLCLT i/p, abdt v f dk lith, mnr foss, oo, abdt v f qtz gr, tr-com v f glauc, tr carb, mat, sft-brit, dom frm, mnr sft & brit, sbblky, n vis por

CALCARENITE: m lt gry-med gry, v f-f, wl srt, rnd-sbang, abdt arg mtz, rr micrxln, tr lith, com foss (oo, Foram, Amm), rr glauc, mnr lse, dom brit-mod hd i/p, v p vis por, tr moldic por, n shw

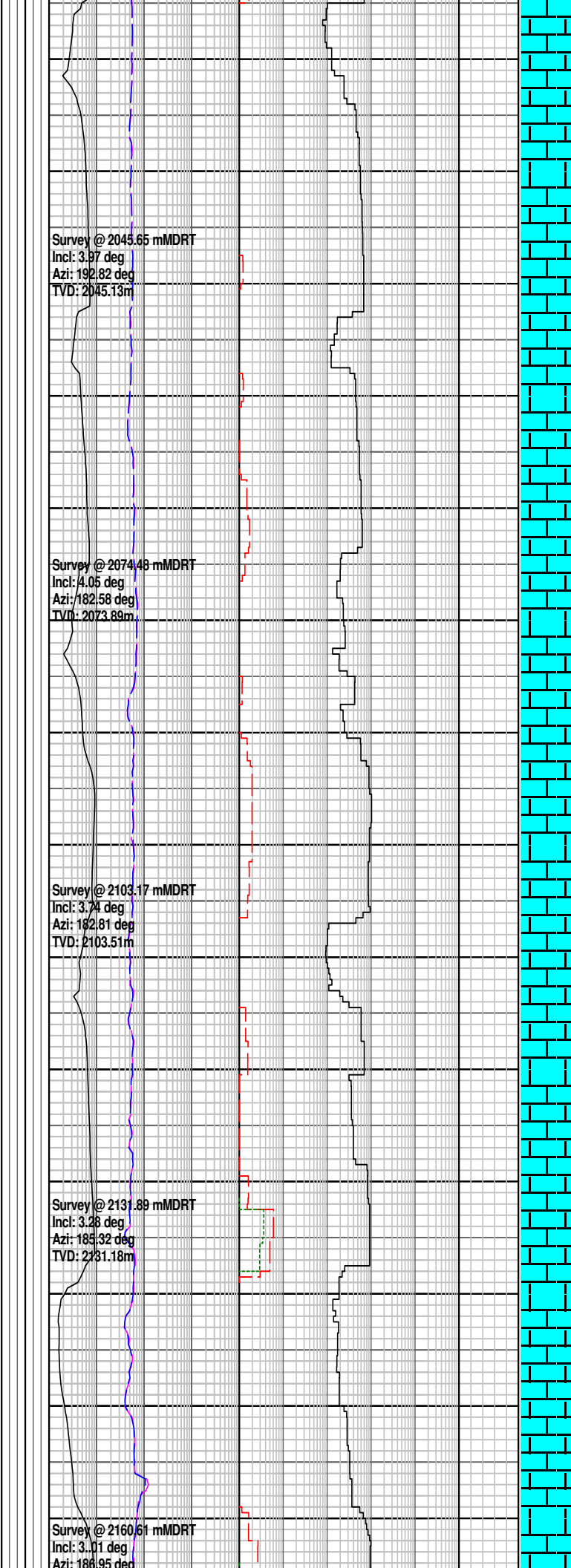
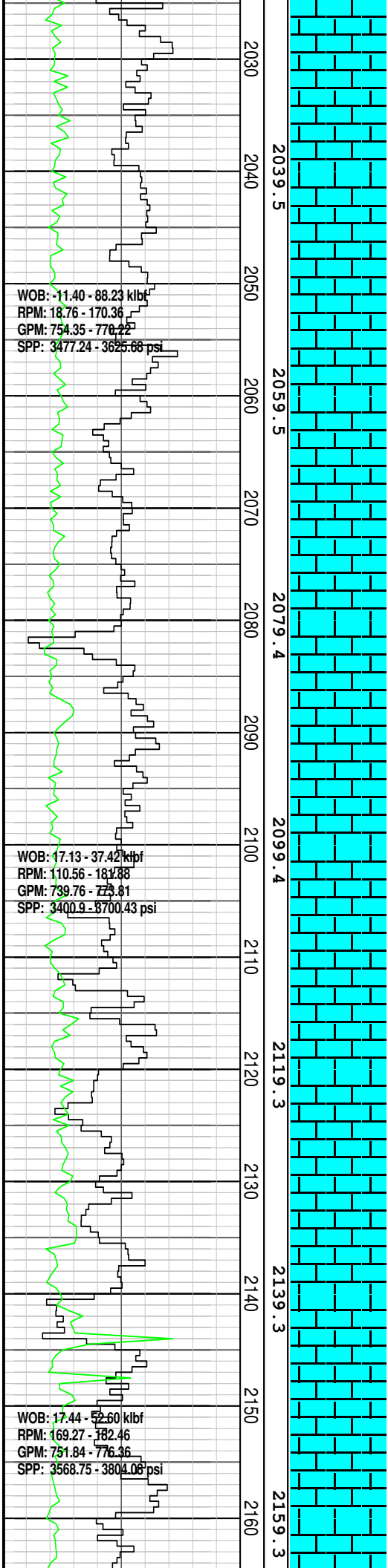
CALCISILTITE: m lt gry, com lt olv gry-lt gry, mnr olv gry, abdt arg mtz, mnr f dk lith, mnr oo, mnr v f qtz gr, tr glauc, tr carb mat, sft-brit, dom frm, mnr sft & brit, sbblky, n vis por, n shw



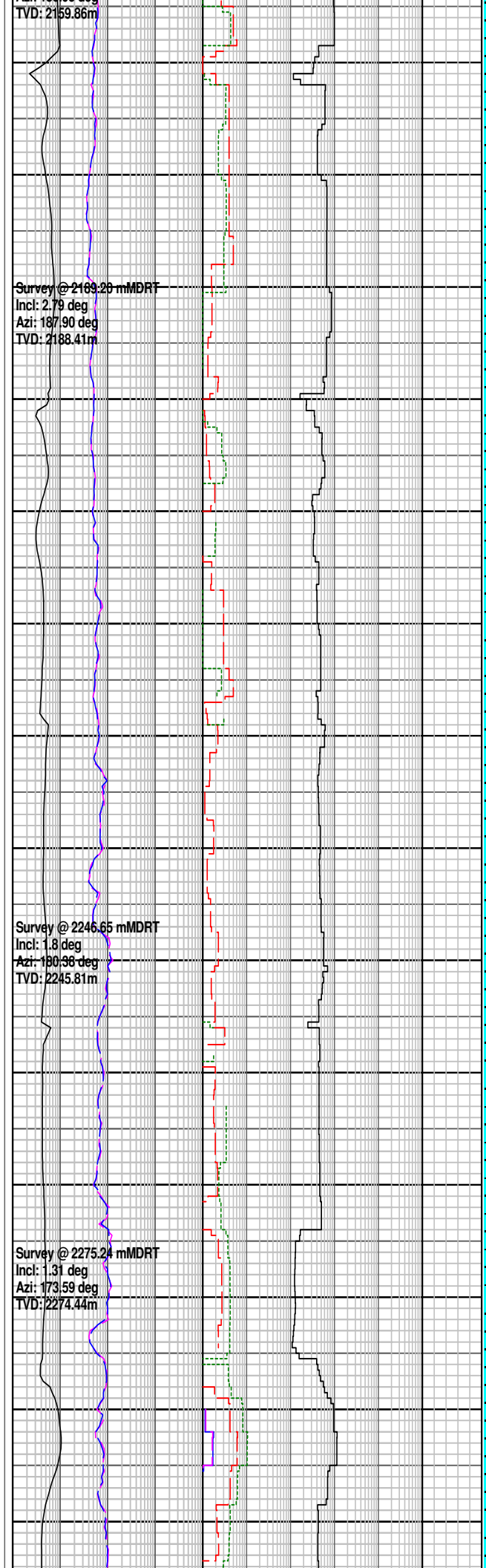
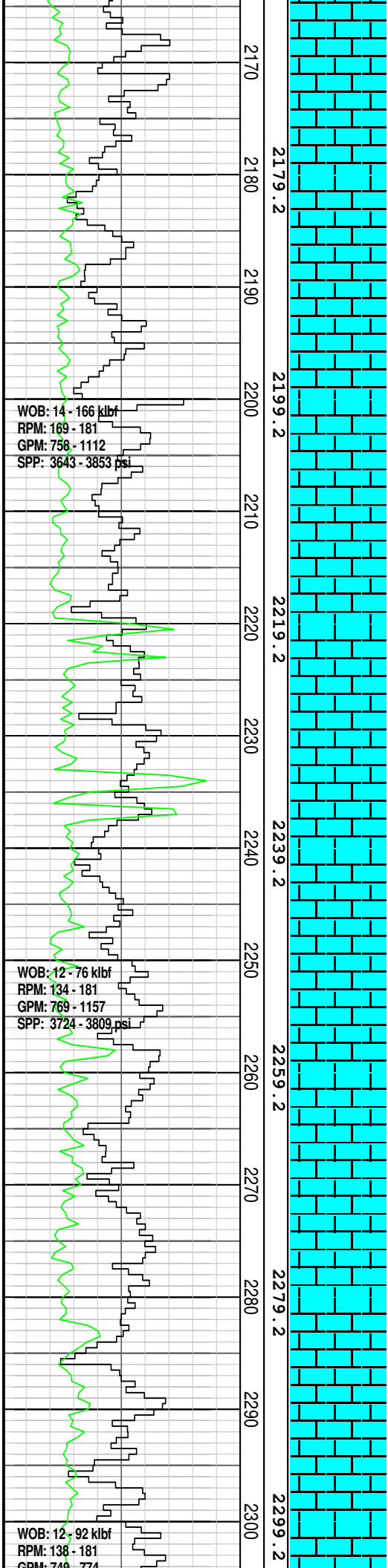
CALCILUTITE: olv gry, arg
 grad-CALC CLYST i/p, mnr v
 f dk lith, tr glauc mat, mnr oo,
 tr carb mat, frm, sbblky, n vis
 por, n shw

DOLOMITE: m dk gry- dk gry,
 micrln, tr glauc mat, v hd,
 ang

CALCILUTITE: olv gry, arg
 abdt v f dk lt, tr glauc mat, tr
 oo, tr carb mat, tr v f qtz gr,
 frm-brit, dom frm, com brit,
 sbblky, n vis por, n shw



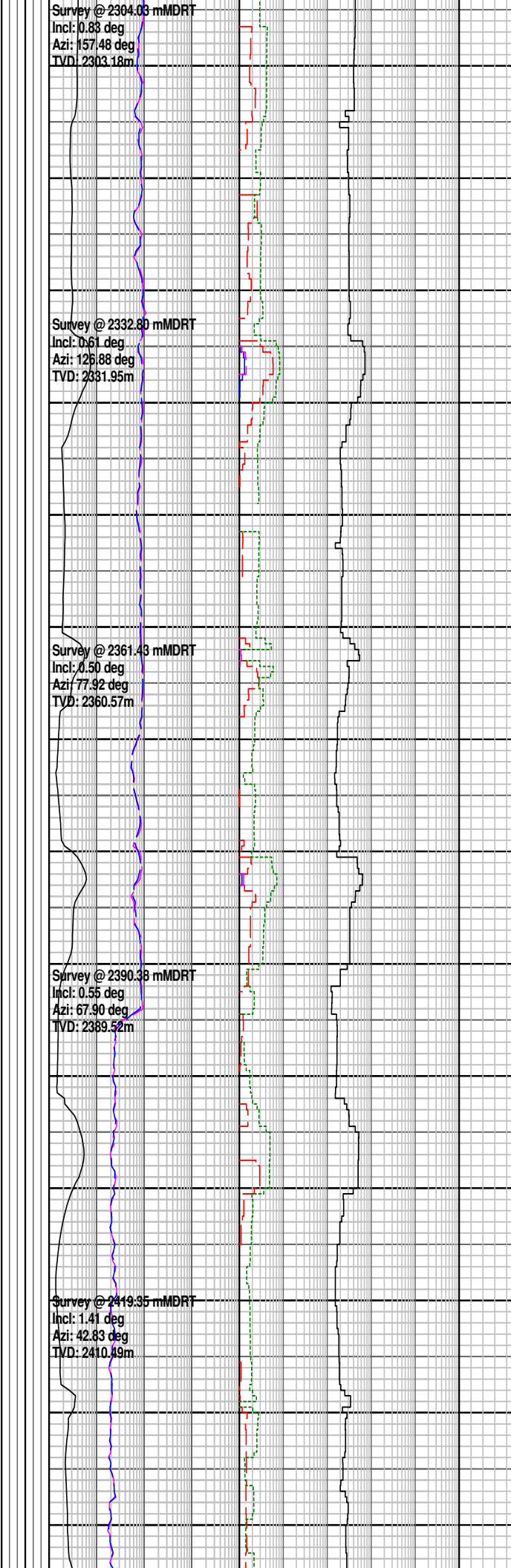
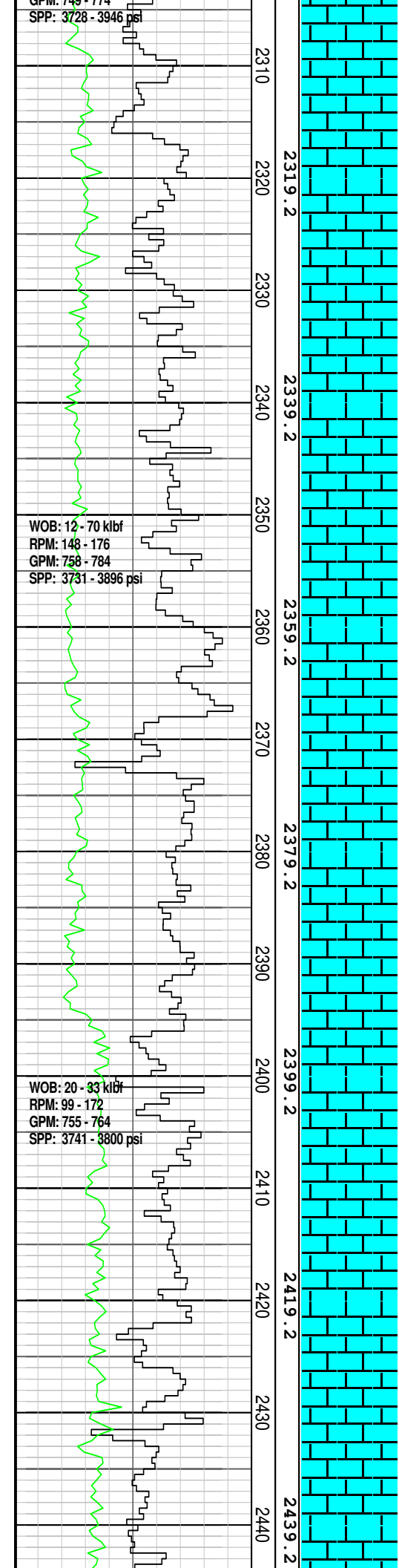
CALCISILTITE: olv gry, gnsh gry, lt olv gry-off wh, com-abdt arg mtx & loc grd-CLCLT i/p, com v f dk lith, com oo, mnr v f fltg qtz gr, tr v f glauc, tr carb mat, frm-mod hd, sbblky, n shw



CALCILUTITE: olv gry, arg abdt v f dk lith, tr glauc mat, tr oo, tr carb mat, tr v f qtz gr, frm-brit, dom frm, com brit, sbblky, n vis por, n shw

CALCISILTITE: olv gry, gnsh gry, lt olv gry-off wh, com-abdt arg mtx & loc grd-CALC CLYST i/p, loc aren, com v f dk lit, com oo, mnr v f fltg qtz gr, tr v f glauc, tr carb mat, frm-mod hd, sbblky, n vis por, sbblky, n vis por, n shw

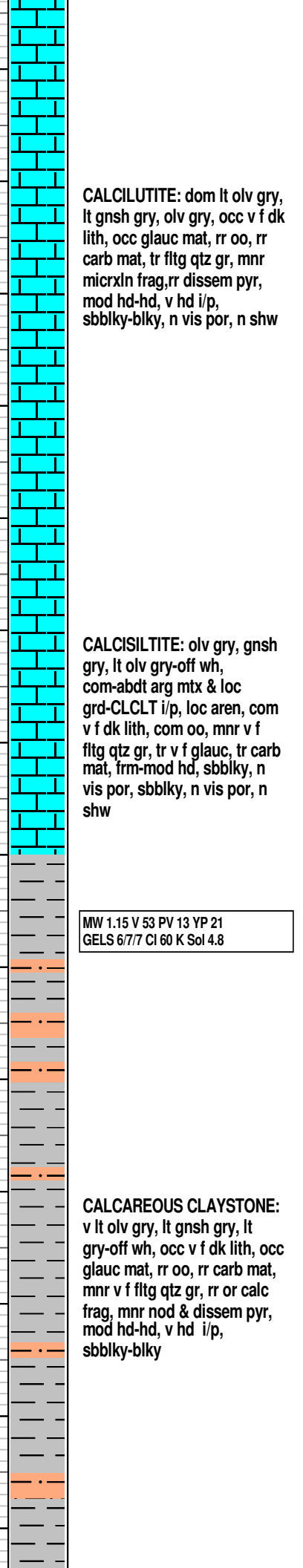
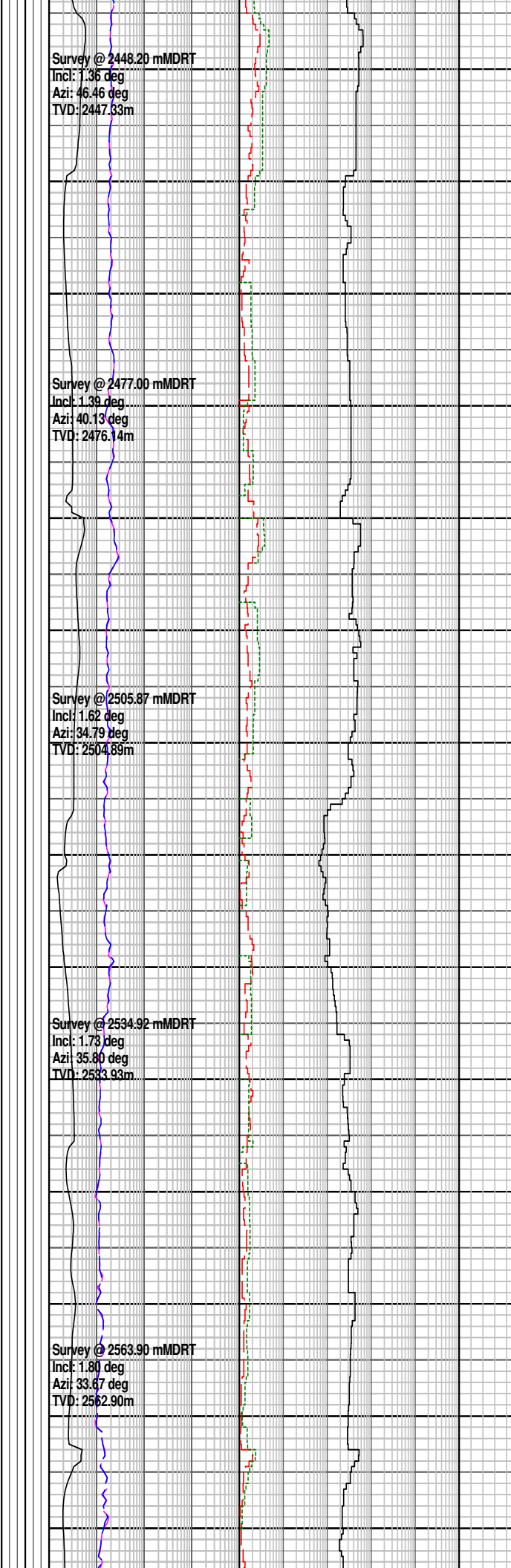
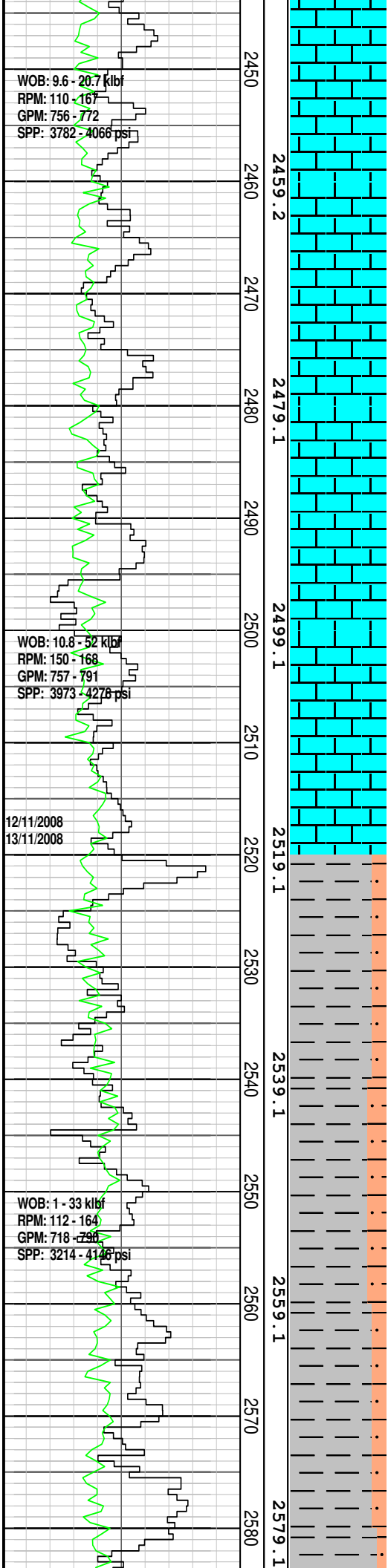
CALCILUTITE: olv gry, arg abdt v f dk lit, tr glauc mat, tr

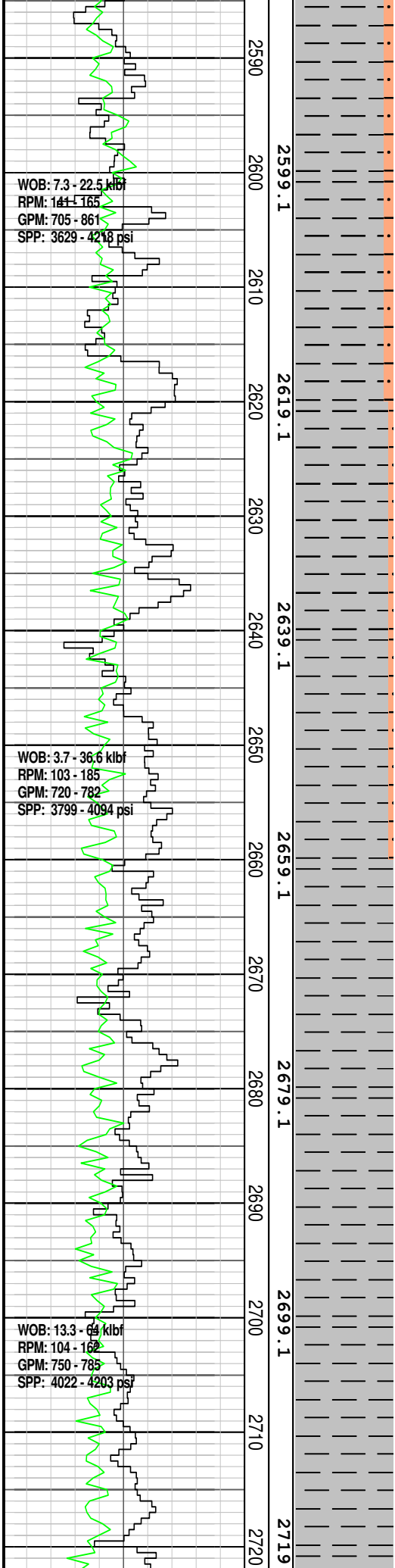


oo, tr carb mat, tr v f qtz gr,
frm-brit, dom frm, com brit,
sbbiky, n vis por, n shw

CALCISILTITE: olv gry, gnsh
gry, lt olv gry-off wh,
com-abdt arg mtx & loc
grd-CALC CLYST i/p, loc
aren, com v f dk lith, com oo,
mnr v f fltg qtz gr, tr v f glauc,
tr carb mat, frm-hd, sbbiky, n
vis por, sbbiky, n vis por, n
shw

CALCILUTITE: olv gry, arg
abdt v f dk lith tr glauc mat, tr
oo, tr carb mat, tr v f qtz gr,
frm-brit, dom frm, com brit,
sbbiky, n vis por, n shw





Survey @ 2592.89 mMDRT
 Incl: 1.74 deg
 Azi: 25.08 deg
 TVD: 2591.87m

Survey @ 2621.85 mMDRT
 Incl: 1.54 deg
 Azi: 25.98 deg
 TVD: 2620.82m

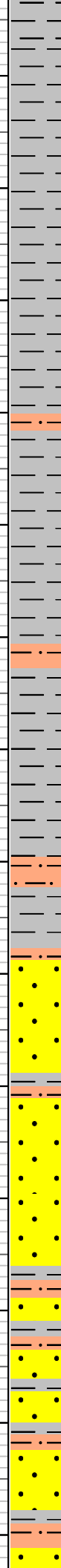
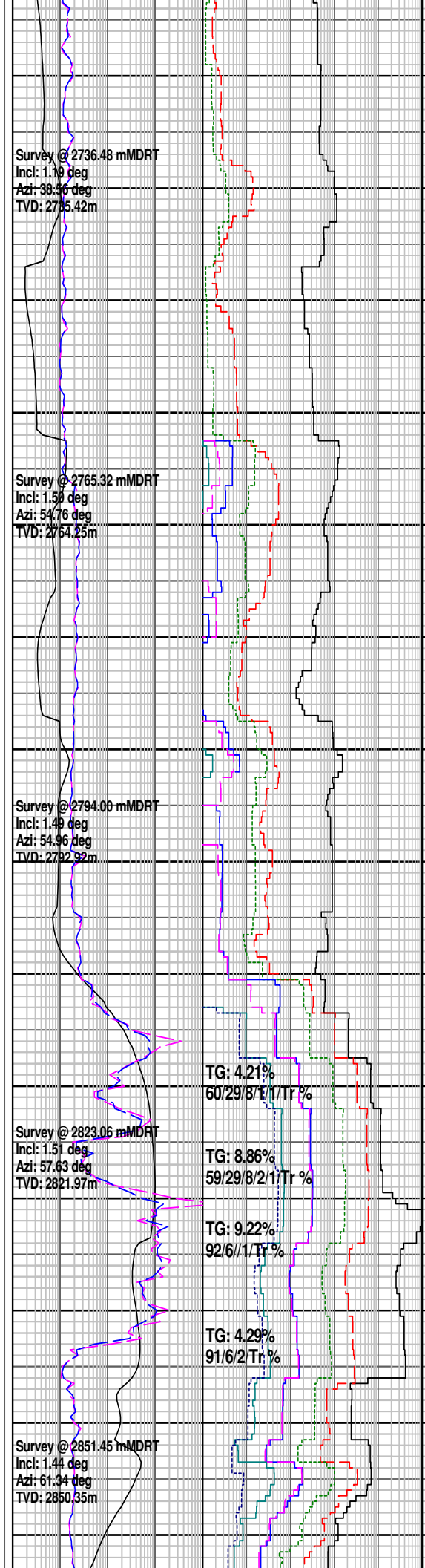
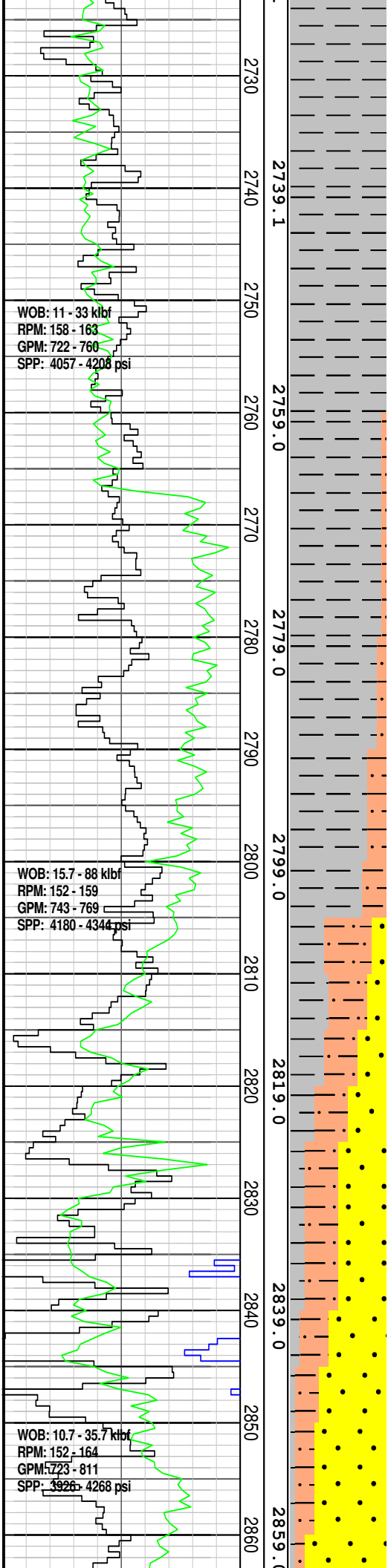
Survey @ 2650.67 mMDRT
 Incl: 1.53 deg
 Azi: 25.37 deg
 TVD: 2649.63m

Survey @ 2679.3 mMDRT
 Incl: 1.32 deg
 Azi: 23.81 deg
 TVD: 2678.31m

CALCAREOUS SILTSTONE:
 olv gry, gnsh gry, lt olv gry-off wh, com-abdt arg mtx & loc grd-CALC CLYST i/p, loc aren, com v f dk lith, com oo, mnr v f fltg qtz gr, tr v f glauc, tr carb mat, frm-hd, sbbiky

CALCAREOUS CLAYSTONE:
 v lt olv gry, lt gnsh gry, lt gry-off wh, occ glauc mat, rr oo, rr carb mat, mnr v f fltg qtz gr, mnr nod & dissem pyr, mod hd-hd i/p, sbbiky-blky

CALCAREOUS CLAYSTONE:
 v lt olv gry, lt gnsh gry, lt gry-off wh, occ glauc mat, rr oo, rr carb mat, mnr v f fltg qtz gr, mnr nod & dissem pyr, mod hd-hd i/p, sbbiky-blky

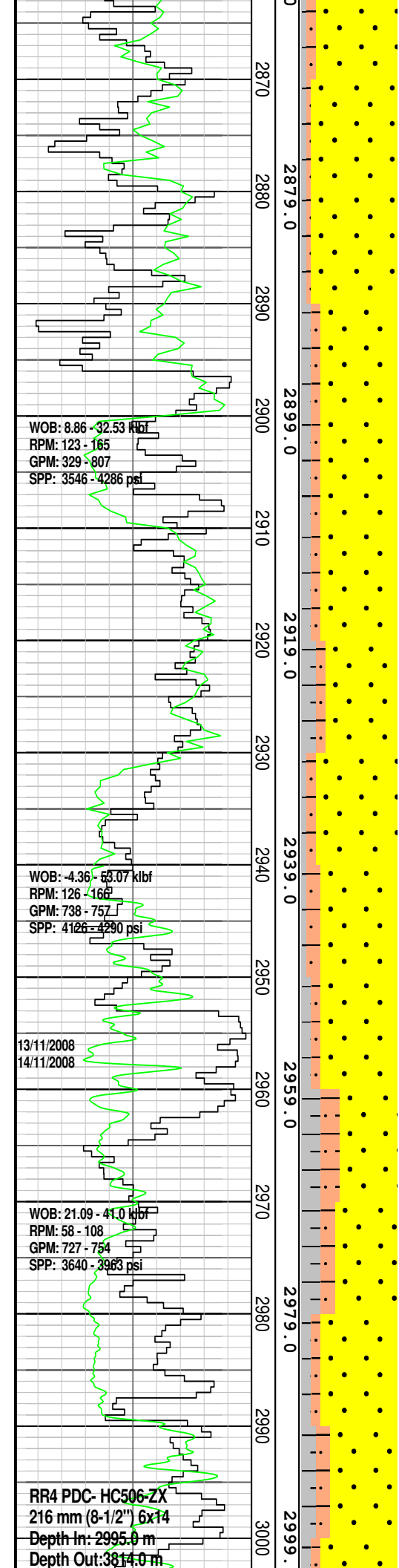


CALCAREOUS CLAYSTONE:
olv gry, mnr m lt gry-m gry, tr micmic, tr v f-f fltg qtz gr, tr oo & foss, rr carb mat, tr nod & dissem pyr, tr glauc, frm-hd, dom frm, com brit, mnr hd, v hd, i/p, sbblky-sbfnis, dom sbblky, mnr sbfnis

SILTSTONE: dus yelsh brn-brnsh blk, olv blk i/p, aren, abdt glauc, com slit, mnr micmic, tr v f fltg qtz gr, tr v f calc frag, tr mic flk, tr pyr, sft-frm, sbblky

SANDSTONE: cl-trnsl, v f-v crs, dom v f-f, tr-abdt med, nil- mnr crs-v crs, dom mod srt-wl srt, sbang-rnd, dom sbrnd, com sbang, abdt rnd, nil-com wl rnd, tr-rr strng pyr cmt/mtx, dom nil-tr mod sil cmt, tr pyr & glauc incl, abdt glauc, tr brit-v hd agg w/ pyr cmt, dom disagg, nil vis por, p-f inf por, n hydc fluor

SANDSTONE: cl-trnsl, com op, f-v crs, dom m-crs, com f, com v crs, mod srt, sbang-wl rnd, dom sbrnd, abdt sbang, abdt rnd, mnr wl rnd (crs-v crs gr), tr strng calc cmt, tr strng pyr cmt/mtx, abdt glauc, tr pyr & glauc incl, rr fis qtz shard, tr brit-v hd agg, dom disagg, n vis por, ad inf



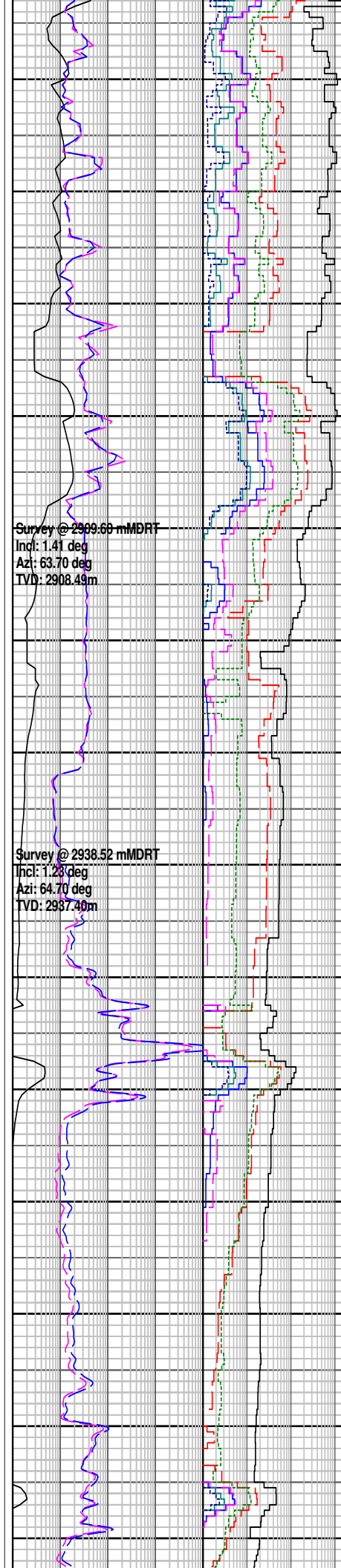
WOB: 8.86 - 32.53 kbf
 RPM: 123 - 165
 GPM: 329 - 807
 SPP: 3546 - 4286 psi

WOB: 4.36 - 63.07 kbf
 RPM: 126 - 166
 GPM: 738 - 757
 SPP: 4126 - 4290 psi

13/11/2008
 14/11/2008

WOB: 21.09 - 41.0 kbf
 RPM: 58 - 108
 GPM: 727 - 754
 SPP: 3640 - 3963 psi

RR4 PDC- HC506-ZX
 216 mm (8-1/2") 6x14
 Depth In: 2995.0 m
 Depth Out: 3814.0 m



Survey @ 2909.68 mMDRT
 Incl: 1.41 deg
 Azi: 63.70 deg
 TVD: 2908.49m

Survey @ 2938.52 mMDRT
 Incl: 1.28 deg
 Azi: 64.70 deg
 TVD: 2937.40m

dom disagg, n vis por, v gd inf por, n hycd fluor

SANDSTONE: cl-trnsl, abdt op, f-v crs, dom crs-v crs, mnr f, abdt med, wl srt, sbang-wl rnd, dom sbrnd-rnd, abdt sbang, com wl rnd, tr strng calc cmt, tr strng sil cmt w fusc gr bonds, i/p abdt arg cmt/mtx w f gr & abdt glauc & grad-arg glauc Sst, com glauc, tr mic flk, tr foss, rr fis qtz shards, brit-v hd agg(10%), dom disagg(90%), n vis por, v gd inf por, n hycd fluor

GLAUCONITIC SANDSTONE: m dk gry-olv blk, com m gry, cl-trnsl, v f-m, dom v f-f agg, dom m disagg gr, wl srt, sbang-rnd, dom sbrnd-sbang, mnr mod strng calc cmt, mnr mod strng sil cmt, tr arg cmt/mtx & grd-ARG SST, com-abdt lt gry arg mtx, com brn gry slit mtx i/p, v f-m glauc grd-GNSD i/p, tr mic flk, tr f pyr nod, tr lit, tr carb mat, abdt fri-mod hd agg, dom brit-mod hd, n hycd fluor

SANDSTONE: cl-trnsl, abdt op, m-v crs, dom crs-v crs, abdt med, wl srt, sbang-wl rnd, dom sbrnd-rnd, com sbang, abdt wl rnd, tr strng calc cmt, tr pyr cmt/mtx, tr glauc & glauc stn, tr pyr len & incl, tr mic flk, rr fiss qtz shard, brit-v hd agg, dom disagg, nil vis por, v gd inf por

POOH for bit trip @ 2955.00 mMDRT

Wireline GR and Res Data from 2940.0m to TD

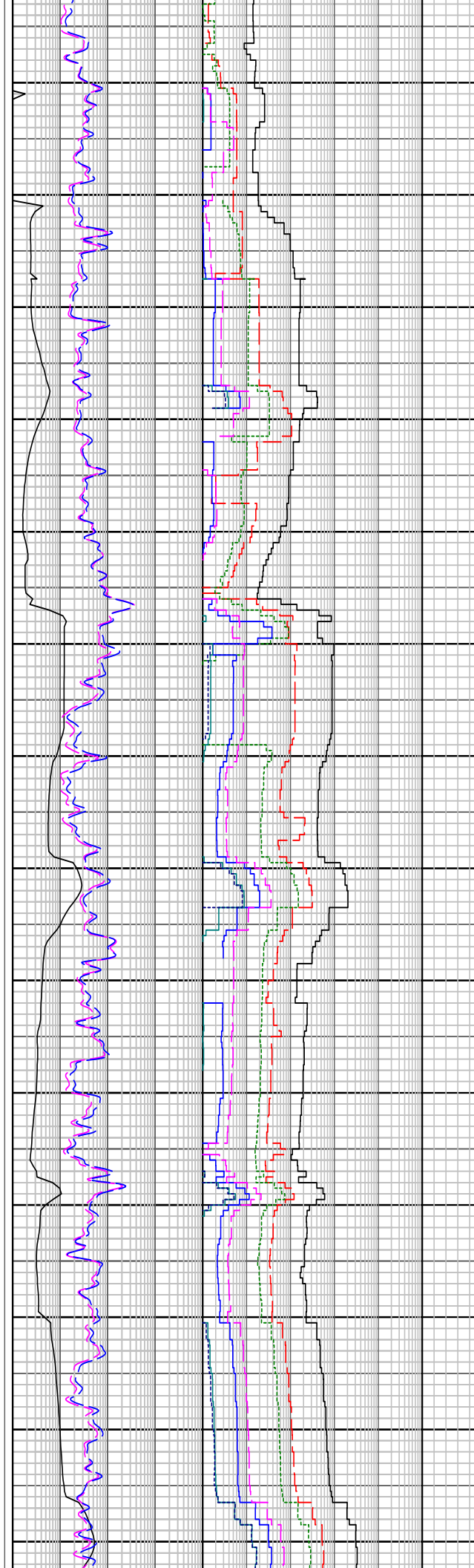
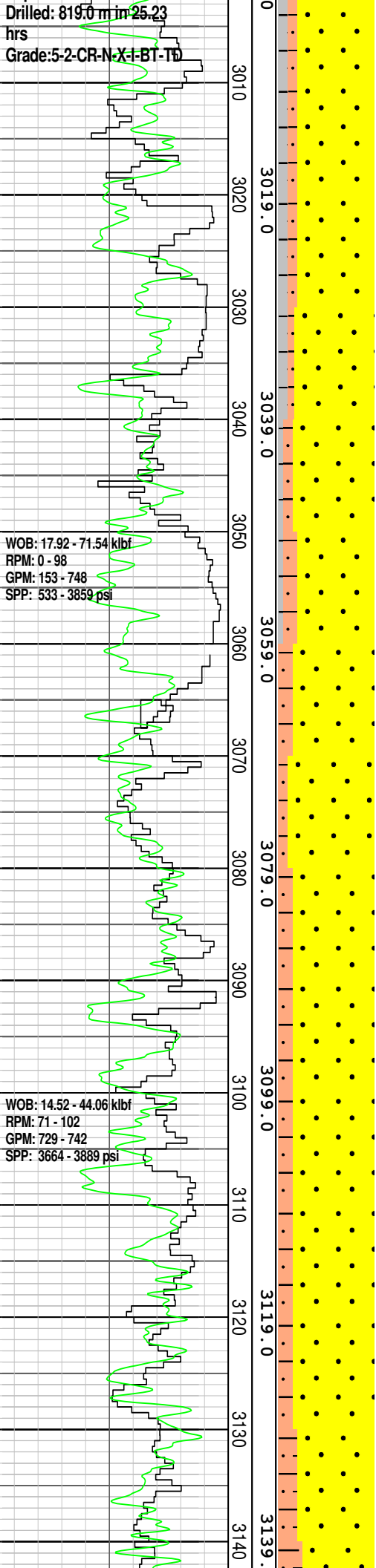
SILTSTONE: med dk gry bn, olv blk, silly aren, com f-med glauc grn, com tan lith, mnr micmic, tr-mnr nod & dissem pyr, mod hd-hd, sbblky

CLAYSTONE: lt blsh gry, lt

Drilled: 819.0 m in 25.23
hrs
Grade: 5-2-CR-N-X-I-BT-TD

WOB: 17.92 - 71.54 klbf
RPM: 0 - 98
GPM: 153 - 748
SPP: 533 - 3859 psi

WOB: 14.52 - 44.06 klbf
RPM: 71 - 102
GPM: 729 - 742
SPP: 3664 - 3889 psi



gry, lt gnsh gry, sil, mnr calc
mat, com off wh lith, com
micmic, hd-v hd, sbfis-sbblky

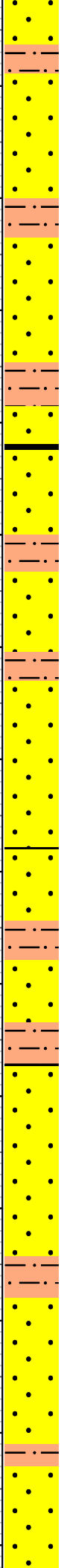
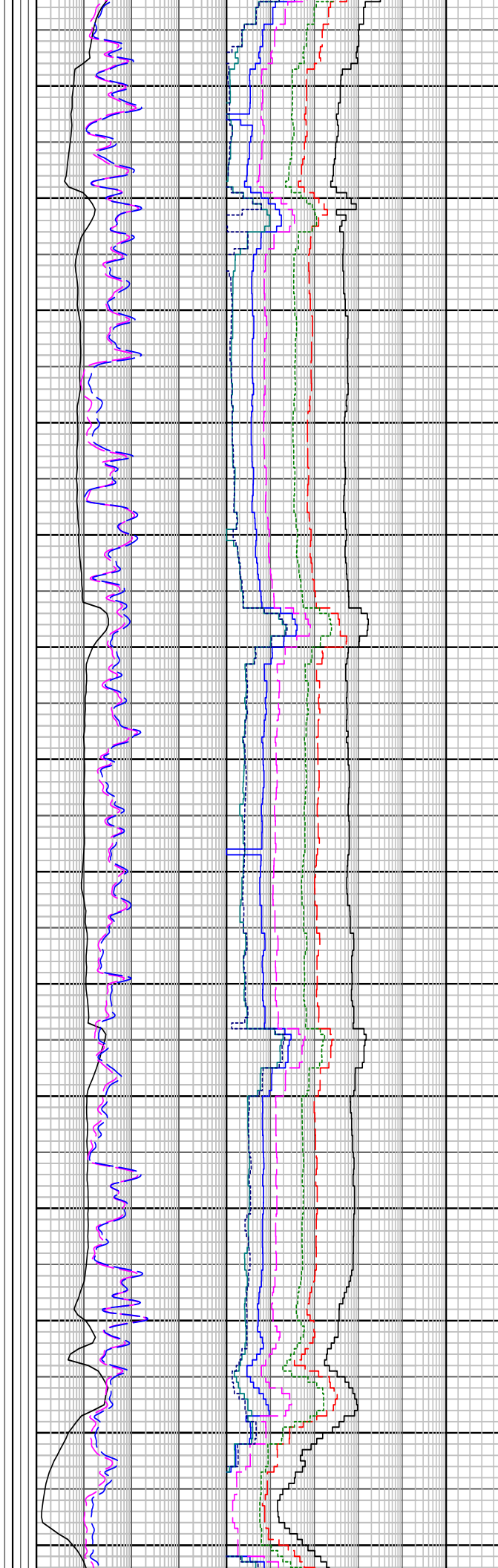
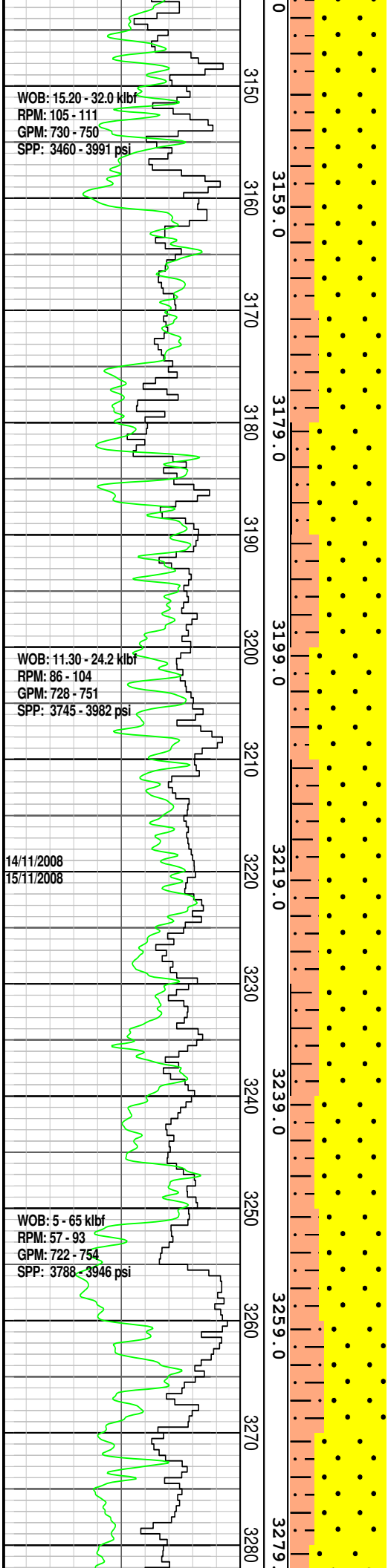
SANDSTONE: cl-trnsl, fros,
dom crs-v crs, com f-med
grn, p-loc wl srt, ang-sbang,
sbrnd w/-f-med grn, mnr wk
pyr cmt, tr wk calc cmt, n vis
mtx, com nod pyr cmt glauc
nod, com lse med glauc grn,
gen cln disag grn, v gd inf
por

FLUORESCENCE: (Tr%)
(2952.0-3130.0 mMDRT) mod bri pl
blu-off wh sptd res fluor ass/w crs
SST gr, slw diff ct & mnr slw bldg ct,
thn off wh-pl gn flm res

SILTSTONE: m dk gry brn, m
brn, occ off wh-tan, arg i/p,
occ f-m glauc gr, com tan lith,
mnr micmic, com carb mic
lam, tr-mnr nod, mod hd-hd,
sbblky

SANDSTONE: off wh,
clr-trnsl, dom v f-m w/ com
crs-v crs frac gr, ang-sbrnd,
dom sbang, com strng sil cmt
& occ fsd gr bondrs, mnr
mod strng pyr cmt, tr wk calc
cmt, com off wh arg mtx whr
v f-f ti agg, occ carb spk com
nod pyr, rr glauc nod, com
cht frag, com fri-mod hd f gr
gre, gen cln disag crs gr &
frac qtz shard.

pr-fr vis por, gen fr-gd inf por



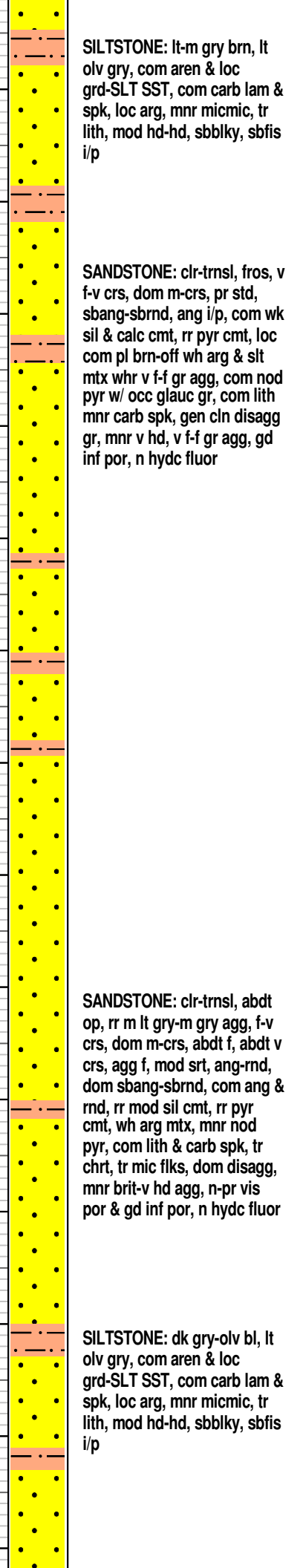
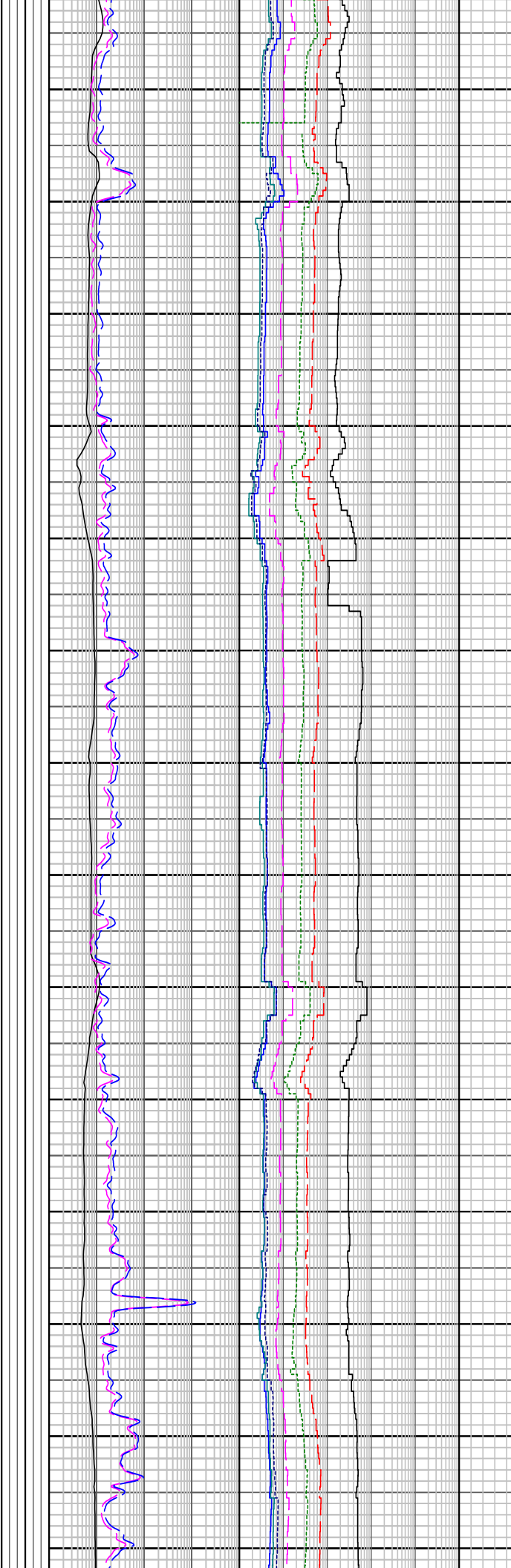
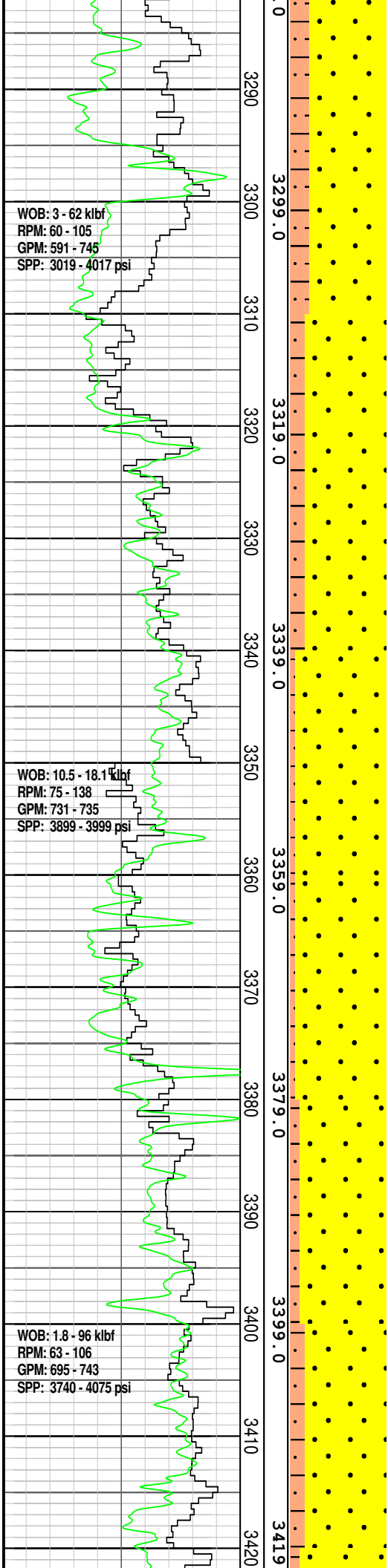
FLUORESCENCE: (Tr%)
(3240.0-3320.0 mMDRT) brt pl blu-off
wh spdt res fluor ass/w crs SST gr,
slw diff ct & wk slw bldng ct, thk off
wh-pl gn film res

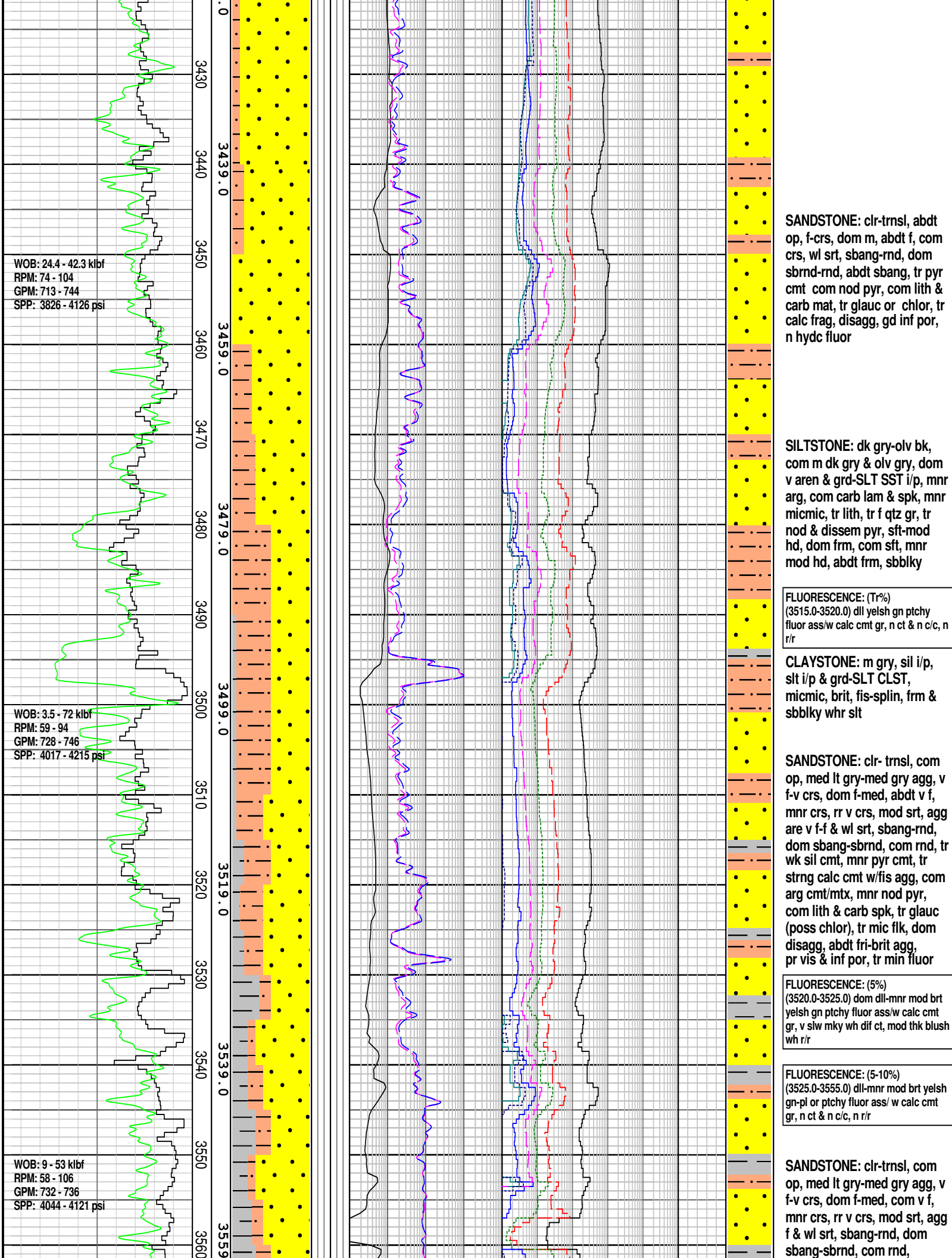
COAL: blk, olv blk, vit-sbvit &
grd, com slit lam & com grd-
CARB SLTST, hkl i/p, hd-v
hd, sbconch-sbblky

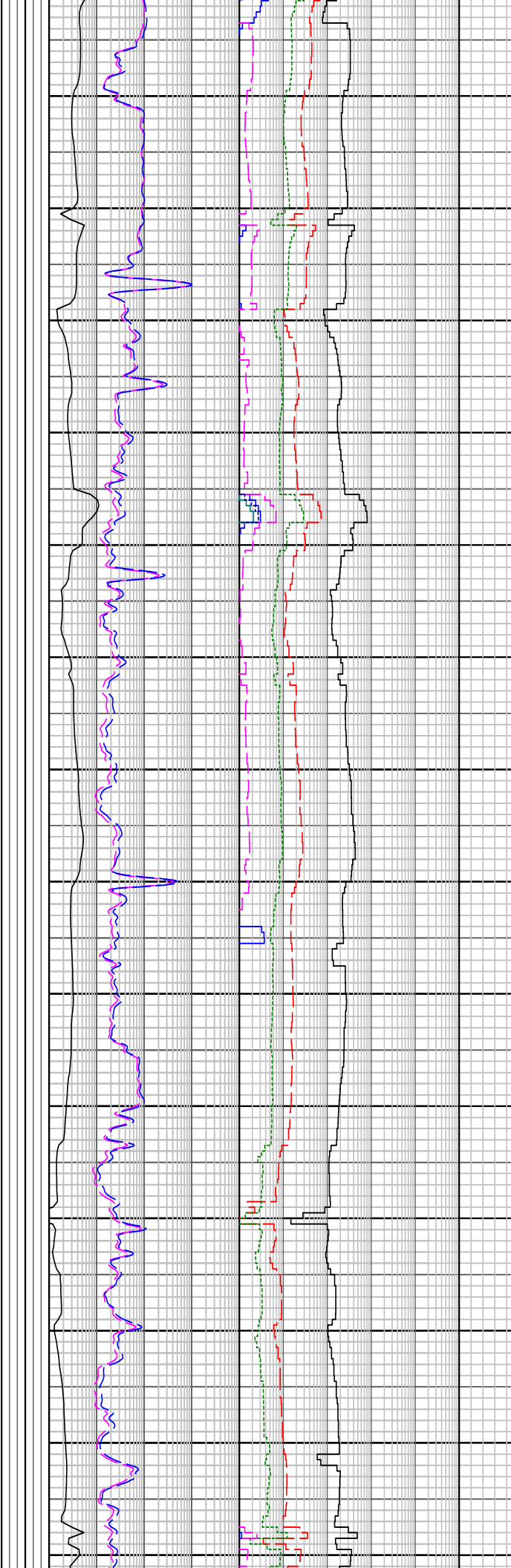
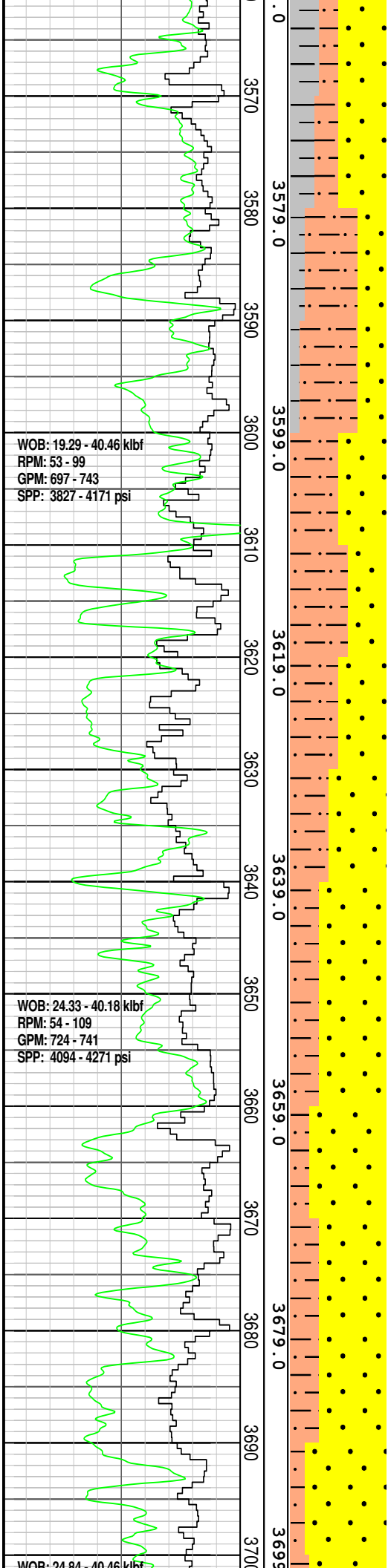
MW 1.15 V 53 PV 12 YP 28
GELS 9/10/11 Cl 55K Sol 4.3

SILTSTONE: m brn, m gry
brn, lt olv gry, com arg & loc
grd-SLT CLST, com carb lam
& spk & loc grd-VIT C strgr,
loc aren & grd to SLT SST
i/p, mnr micmic, tr lith,
mod hd-hd, sbfis-sbblky

SANDSTONE: off wh, pl brn,
clr-trnsl, v f-m, decr com
crs-v crs frac gr, sbang-
sbrnd, com strng sil cmt &
occ fsd gr bondrs whr crs gr,
tr pyr cmt, tr wk calc cmt,
com off wh arg mtx whr v f-f ti
agg, occ pl brn slt mtx & loc
grd-AREN SLTST, com carb
spk, com nod pyr w/ occ
glauc gr, com fri-mod hd f gr
agg, gen cln
disagg gr, pr-fr, vis, por in f
agg, pr-gen fr inf por, n hydc
fluor







tr wk-i/p strng sil cmt, rr pyr cmt, tr strng calc cmt w/ fis agg, com arg cmt/mtx, com nod pyr, com lith & carb spk, tr glauc, tr mic flk, tr qtz shard, dom disagg, abdt fri-hd agg, pr vis & fr inf por, hydc fluor, min fluor

FLUORESCENCE: (Tr-5%) (3555.0-3580.0) dll yelsh gn ptchy fluor ass/ w calc cmt gr, n ct & slw c/c, mod thk yelsh gn rng-ptchy flm res

SILTSTONE: dom olv gry, olv blk, dom aren & grdg-SLT SST i/p, arg i/p & grdg-SLT CLST, com carb lam & mat, micmic, com lith, tr nod & disse pyr, tr v f glauc, com arg mtx, sft-brit, dom sft-frm, com brit, sbbkly

SANDSTONE: clr- trnsl, com op, med dk gry-med gry agg, v f-v crs, dom med-crs, com v f, abdt f, com v crs, pr srt, agg f & wl srt, sbang-rnd, dom sbang-sbrnd, com rnd, tr wk-i/p strng sil cmt, mnr pyr cmt, tr strng calc cmt w/ fis agg, tr dol cmt, com arg cmt/mtx, com slit mtx & grdg-SLT SST, tr disp calc mtx, mnr nod pyr, com lith & carb spk, tr glauc, tr qtz shards, dom disagg, abdt fri-hd agg, pr vis & fr inf por, n hydc fluor

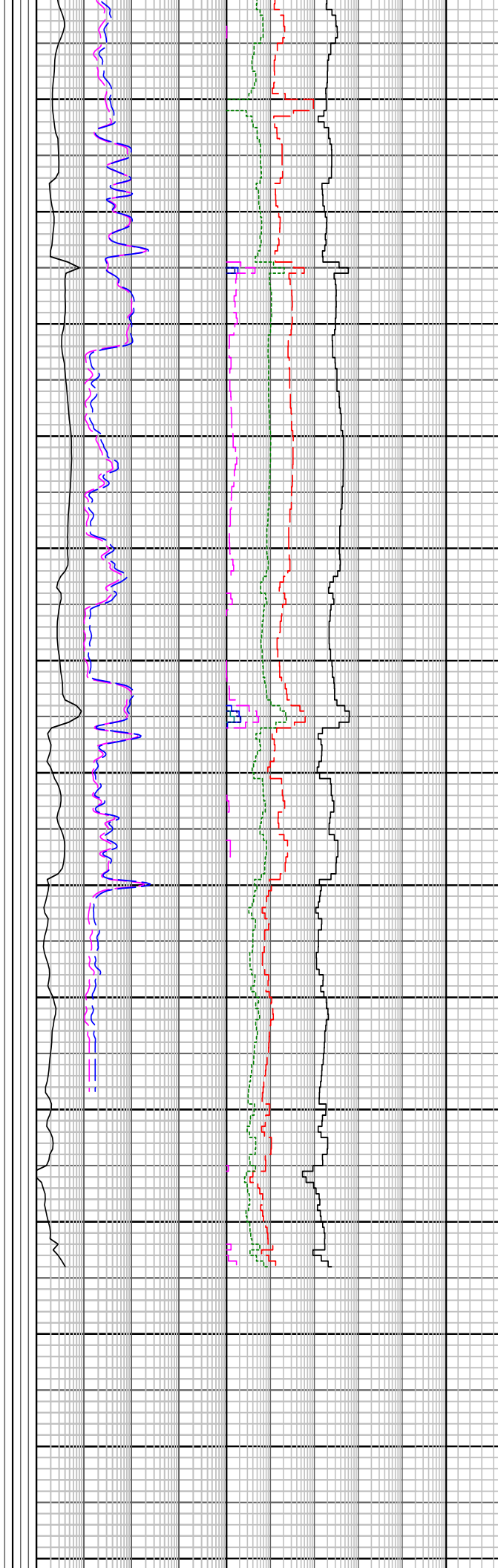
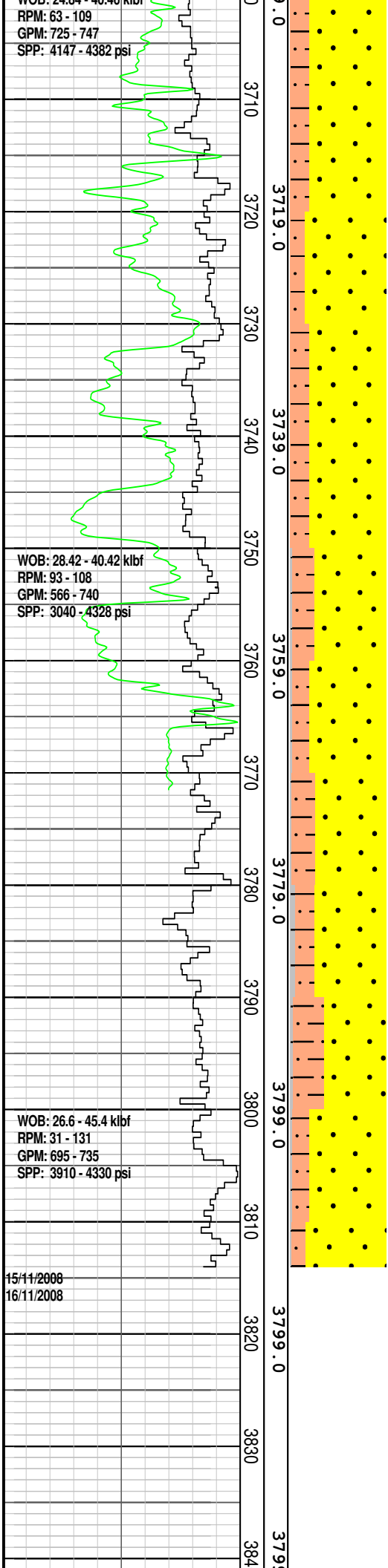
SILTSTONE: olv blk, brnsh gry, olv gry, dom aren & grdg-SLT SST i/p, arg i/p & grdg-SLT CLYST, com carb lam & spk, com micmic, abdt lith, com disse pyr, tr v f, glauc, mod hd-hd, sbbkly

WOB: 24.04 - 40.40 kbf
 RPM: 63 - 109
 GPM: 725 - 747
 SPP: 4147 - 4382 psi

WOB: 28.42 - 40.42 kbf
 RPM: 93 - 108
 GPM: 566 - 740
 SPP: 3040 - 4328 psi

WOB: 26.6 - 45.4 kbf
 RPM: 31 - 131
 GPM: 695 - 735
 SPP: 3910 - 4330 psi

15/11/2008
 16/11/2008



SANDSTONE: off wh, trnsl & fros, v f-v crs, dom f-med, ang-sbang, pr srt, com strng sil cmt, mnr wk calc cmt & loc com strng pyr cmt, com-abdt off wh arg mtx w/-v f-f gr agg, abdt ang frac v crs shards w/ occ fsd gr bonds, com-abdt nod pyr, occ lith & carb spk, v pr vis por in hd-v hd f gr agg, gen fr-gd inf por, n hydc fluor

MW 1.15 V 58 PV 15 YP 31
 GELS 10/12/13 Cl 57K Sol 4.4

CLAYSTONE: lt blush gn, sil, occ v f lith, tr micmic, mod hd-hd, v hd i/p, sbfhis

SANDSTONE: off wh, trnsl & fros, v f-v crs, dom med, ang-sbang, pr srt, com strng sil cmt, mnr wk calc cmt & loc mnr strng pyr cmt, com-abdt off wh arg mtx w/ com carb mic lam w/ v f-f gr agg, abdt ang frac v crs shards w/ occ fsd gr bonds, abdt nod pyr, occ lith & carb spk, tr rk flour & bit metam, v pr vis por-v hd f gr agg, gen fr-gd inf por, n hydc fluor

SILTSTONE: lt-m brn, olv gry, pl gry, m-dk brn w/ com-abdt f-crs glauc gr, aren & com grd-v f SLT SST, com aren lam, com micmic, mnr carb spk, mod hd-hd, sbblky-sbftis

Dory 1 reached 216mm (8-1/2") hole section TD @ 3814.00 mMDRT at 00:00 hrs on 16th November 2008

Electric Logs: Suite # 1
 Run 1: GLSM
 Run 2: RCI (54 Pretests - 42 good, 6 curtailed, 5 no seal, 1 aborted; 4 samples taken)
 Run 3: RCOR (Tool Failed)
 Run 4: RCOR (Tool Failed)
 Run 5: VSP

FORMATION EVALUATION LOG

Drilling Rate	MD meters	TVDR meters	Cuttings Lithology	Oil Show	Visual Inferred Porosity	Gas Data	Chromatograph Data	Calcinetry	Lithology Description
ROP (m/hr) 200 180 160 140 120 100 80 60 40 20 ROP (m/hr) 400 380 360 340 320 300 280 260 240 220 Gamma Ray 0 200 API	MD meters 1:500	TVDR meters	Cuttings Lithology	Oil Show P F G	Visual Inferred Porosity P F G	Gas Hydrocarbon Avg % 0.1 1 10 100 Resistivity Shall 0.1 1000 Ohm.m Resistivity Deep 0.1 1000 Ohm.m	Methane ppm 100000 Ethane ppm 100000 Propane ppm 100000 iso-Butane ppm 100000 n-Butane ppm 100000 iso-Pentane ppm 100000 n-Pentane ppm	CaCO3 % 20 40 60 80 100 MgCO3 % 100 80 60 40 20	Lithology Description